



SureSet 
Resin Systems





CONTENTS

Why SureSet?	- 4
Why resin bound?	- 5
Applications	- 6
Bases	- 7
Design	- 8
Specify	- 9
Installation	- 10
Services	- 11
Case Study - Commercial	- 12
Colour Range	- 13
Application Insight - Tree Pits	- 17
Case Study - Commercial	- 18
Application Insight - FlexiSet	- 19
Case Study - Residential	- 20
Application Insight - StepRise	- 21
Case Study - Commercial	- 22
Trade Products	- 23
21 Year Guarantee and Maintenance	- 24
Testimonials	- 25
Case Study - Global	- 26



WHY SURESET?

We take pride in the fact we offer great customer service along with great products. From start to finish we can offer technical advice, full supply and installation and a 21 year guarantee to complete the service. Our resin bound paving solutions offer natural and recycled materials, unlimited colours, and a design flexibility no other type of paving can match. Unlike many traditional paving systems SureSet is permeable; this means that any proposal including SureSet demonstrates a sustainable approach to water management. As a market leader in permeable resin bound paving, we have the reputation, experience and innovative approach to make any design outstanding throughout the world.

- Durable
- Permeable
- Quick and easy to install
- Unlimited colours
- Flexible design capability
- Low maintenance
- Smooth, hardwearing finish
- Colour stable
- 21 year guarantee

Smooth Finish with No Loose Stone

Seamless finish ideal for disabled access, children, pushchairs and bicycles.

Permeable

The voids in SureSet permeable paving allow water to pass straight through. This natural drainage eliminates puddles and contributes to flood prevention. The permeability of SureSet makes it fully SuDS (Sustainable Urban Drainage Systems) compliant.

Hardwearing

Long lasting surface for pedestrian and vehicular areas.

UV Stable

Offering long term colour stability.

Low Maintenance

Weed growth is minimal and the

open voids eradicate any standing water. All you need to do is sweep and occasionally power wash your surface.

Fast Installation

Approximately 250m² a day can be laid over many existing surfaces. We can arrange everything from start to finish, providing materials and installation.

Design Flexibility

Single or multi-coloured curves, circles, patterns and numbers can be achieved just as easily as a straightforward installation.

Unlimited Colour Range

For creative, innovative designs.

Reinstatement

Can be successfully patched and repaired with an identical formulation.

Environmentally Friendly

The installation method is a low energy cold applied process. Thin layer depth (typically, 18mm) minimises raw material consumption. Can remove the need for excavation and replacement of existing hard surfacing.

21 Year Guarantee

We can install our paving anywhere in the world and our installations are guaranteed for 21 years against:

- Loose stone
- Cracking
- Oil damage
- UV degradation
- Colour fade
- Frost damage
- Workmanship

British Board of Agrément (BBA)

SureSet has undergone rigorous testing required to ensure that it is fit for purpose. We demonstrate compliance with industry regulations and our products are tested and certified annually by the UK's leading certification body. Certificate no 20/5719

SuDS

SuDS is an approach to water management introduced by the Environment Agency. The main principles of SuDS is to mimic natural drainage i.e. allow rainwater to soak back into the ground rather than allowing it to run directly into watercourses.



WHY RESIN BOUND?

Resin Bound by SureSet

The popular paving choice known for its permeability, the stone is mixed with a clear resin on site so that each particle of stone is completely coated with the resin. Once the resin and aggregate are fully mixed together they are then applied to the base to give a permeable, smooth and durable finish.

When combined the finished depth of the bound system usually varies between 12mm and 24mm. The specified depth is dependent on the aggregate size in the mix and the application it is being used for. The resin bound system allows the mixing of different sizes and colours of aggregate to give a wide variety of appearances and textures.



	Resin bound	Block paving	Tarmac	Concrete	Crazy paving	Loose gravel	Resin bonded
Permeable	✓	✓	✓	✓	✗	✓	✗
Weed resistant	✓	✗	✗	✗	✓	✗	✓
Frost resistant	✓	✗	✗	✗	✗	✓	✗
Oil damage safe	✓	✓	✗	✗	✓	✗	✓
Slip resistance	✓	✓	✓	✓	✓	✓	✓
Colour stable	✓	✓	✗	✗	✗	✗	✗
Low maintenance	✓	✗	✗	✗	✗	✗	✗
Durability	✓	✗	✗	✓	✗	✗	✗



APPLICATIONS

SureSet Resin Systems are available in an endless variety of materials and colours, which are suitable for all applications. We advise discussing each project and application with us individually but here is a guide to our recommended usages.



Vehicular



Pool areas



Tree areas



Pedestrian



Decorative

Size	Natural Aggregates			Crushed Marble			Rounded Marble	FlexiSet	Spectrum	Recycled	
	3mm	6mm	10mm	3mm	6mm	10mm	10mm	6mm	3mm	3mm	6mm
Applications											
Pedestrian Paving	✓	✓	✓	✓	✓	✓	✓	✓	✓	✓	✓
Vehicular Use	✓	✓	✓	✓	✓	✓	✓		✓		
Tree Pit		✓	✓		✓	✓	✓	✓			
Pool Surround	✓	✓	✓	✓	✓	✓		✓	✓		
Decorative	✓	✓	✓	✓	✓	✓	✓	✓	✓	✓	✓



BASES FOR SURESET

Asphalt (also known as Tarmac)

Is the ideal base for SureSet paving. Suitable for all traffic types (depending on build up). SureSet can be laid directly onto an existing asphalt surface or a newly installed one as soon as it has cooled. The asphalt should be installed onto an appropriate granular subbase, of adequate depth to accept the expected weight of use.

Existing Concrete

All concrete bases should be structurally sound, be primed, and have a crack reduction membrane (CRM) applied before SureSet is installed.

Freshly-Laid Concrete

A minimum period of 7 days must be allowed before installation of SureSet onto new concrete. The surface should then be primed using a polymer based primer before SureSet is installed. Although SureSet is crack resistant, it will ultimately reflect any crack within the base. Movement joints must be included in the plans, and carried up through the SureSet paving where necessary. A sufficient depth and grade of concrete should be used to withstand the expected loadings in use.

Crushed Rock

Is an ideal base for tree surrounds, and is suitable for areas of low pedestrian traffic with no vehicular access.

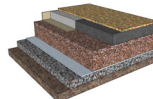
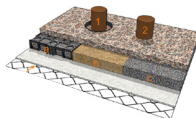
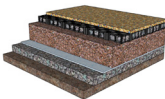
Requires to be built in two layers of 4/20 free draining crushed stone base, and well-compacted to a minimum depth of 100mm. SureSet needs to be laid to a minimum depth of 30mm to compensate for the weaker base.

SureCell ®

Is a recycled plastic cellular grid structure suitable for pedestrian and light vehicular areas (sub-base dependent). When interlocked and filled loose stone and compacted it creates a permeable and load-bearing base course or stand-alone paving surface. When filled the SureCell has a compressive strength of 400t/m²!

As with all groundworks, local, specialist advice must be taken on the subbase requirements for each scheme.

Typical Base build-ups



For questions about laying onto new or existing surfaces contact SureSet +44 (0) 1985 841 180 or download our specifications from our website.



DESIGN

Our wide range of colours and textures allows SureSet to blend in with surrounding materials or provide a striking contrast, depending on the creative vision of the designer.

Resin bound paving has proved to be the perfect design solution for an extensive range of projects across the world.

From **schools**, medical centres, **bridges** and hospitals to **private homes** and pedestrian areas, SureSet has brought to life designs of all shapes, sizes and complexities.

We offer solutions for **exterior** applications in a vast range of colours and textures allowing designers to continue their design theme to the outside hardscapes.

Our product also provides designers the opportunity to create **intricate** and detailed **designs** using stencils or metal edging within the surface.

Whether it is a corporate **logo**, a welcome message to visitors or a school emblem, SureSet can be used to create a perfect, **colour-matched** representation of virtually any subject. Providing a unique design signature to any project.

Our highly skilled team of Installers efficiently complete the project with focus on accuracy and attention to detail.

The result is an extremely **durable** and highly **attractive** solution which will keep its colour and good looks for many years to come.

Add the ultimate '**WOW** factor' to your paving!



Contact us with your design. We will then work closely with you to ensure the right solution is achieved.



SPECIFYING SURESET

If you would like SureSet to provide you with a quotation we will need to know the

- Area size of the area in square metres (m²).
- Application type of use.
- Colour or aggregate you require.

THE PROCESS TO SPECIFY

A SureSet resin bound surface consists of:

- Aggregate
Natural gravels, crushed rock, marble or recycled materials.
- Crystal clear resin binder which is UV stable and flexible.

SureSet resin bound paving is a cold laid process.

The resin bound aggregate is mixed together to ensure each particle is fully coated in resin, allowing it to bind together when laid.

TO SPECIFY THE EXACT SURESET BLEND AND DEPTH OF MATERIAL

- Product code
e.g. L1813/06
 - Description
Nominal size, colour and texture (crushed / rounded) e.g. 6mm Sterling.
 - Depth of laying
e.g. 18mm (dependent on application type).
- Code and descriptions are labelled on the bottom

of each sample disc.

Recommended depths of laying are on SureSet specifications.

We can install using the EcoBatcher - a machine that efficiently dispenses our resin directly into the mixer, which in effect saves single use plastic buckets from landfill. Single use plastics are a part of almost everything we buy and consume as a business, and of course as a nation. *Our mission is to reduce single-use plastic buckets on SureSet sites by 90%.*





INSTALLATION

Our Operations Team will handle all the arrangements for your installation; supporting you through the process and doing everything they can to make it as easy as possible for you.

SureSet installations are completed in various ways depending on the type of project. The traditional method has been to install the materials using a hand trowel however in recent years we have developed machinery that will allow for a more efficient and accurate installation such as our Power Float and revolutionary EcoBatcher (resin batching machine), which not only saves time but also reduces the need to use thousands of plastic tubs!



CURING TIME

- Can be laid in temperatures as low as 0°C.
- Can be laid over existing surfaces.

DURING AND AFTER INSTALLATION

Our Installers will work tidily and with respect to on-site regulations and neighbouring properties. All adjacent areas will be protected during the installation to minimise the risk of resin contamination. They will clear up behind themselves and take away any rubbish.

With our large network of Approved Installers and Global Partners, we can install a SureSet surface worldwide.

All Approved Installers/Partners have

- Invested in our training programme
- Skills and experience
- Fulfilled our stringent criteria
- A SureSet Certification

If you have a project you wish to self install you should consider using the following DIY and Trade packs, DIY Kits or ProResin please visit our online shop to browse these products at www.suresetshop.com or contact trade@sureset.co.uk



SERVICES

Installation (supply and Install)

Both nationwide and globally, we offer a full installation service. Your SureSet installation will be carried out either by our Approved Installers or one of our Global Partners. All SureSet approved installations are backed by our 21 year Guarantee.

Request a no obligation quotation online.

Trade Products

We understand that experienced tradesmen, builders and DIY enthusiasts may not require our installation services and we have developed a variety of self-install options as well as the opportunity to buy resin only 'ProResin' - drawing on the benefits of our resin bound technology and made available to purchase through our online shop.

Cleaning

We have a full maintenance guide available to download from our website, we also offer a resin bound cleaning service. If you would like to find out more about this, please contact us.



Approved Installer scheme

Supporting our highly skilled Installation Team is a network of SureSet Approved Installers, who complete projects nationwide along with our Global Partners who work internationally.

CPD presentations

We offer resin bound CPD presentations covering the manufacturing, mixing and application processes and maintenance.

Samples

SureSet offer a free sample delivery service, samples can be requested via the website or by contacting the Sales Team.

Resin bound training course(s)

If you are a looking to widen your services, improve your resin bound skills, learn more about polyurethane resins and use them on projects please consider our training course(s) held regularly throughout the year. The training content is a combination of classroom learning and practical application demonstrations. As part of our membership commitment with FeRFA and best practice, we cover the use of our three part chemically curing resin catalyst system, ProResin, used for resin bound paving installations and available to purchase online to use on your own resin bound projects.

If you have a project you wish to self install you should consider using the following DIY and Trade packs, DIY Kits or ProResin please visit our online shop to browse these products at www.suresetshop.com or contact trade@sureset.co.uk



CASE STUDY

Stanmore is a popular residential area, in the London Borough of Harrow, and is home for many at The Royal National Orthopaedic Hospital, which is one out of only 11 Spinal Cord Centres in the UK.

Horatio's Garden is a national charity known and loved for their beautiful gardens in various NHS Spinal Injury Centres built to support those affected by a spinal damage.

Horatio's Garden is named after a young boy named Horatio Chapple, full of ambition to be a Doctor and spent his spare time volunteering at the Duke of Cornwall Spinal Treatment Centre in Salisbury. Sadly, he was taken in a tragic incident when traveling which received an overwhelming amount of love and support - that is when the fundraising began with donations for a garden to be created in his honour. Haratio's legacy continues to grow and is helping patients, families, and NHS staff throughout the UK.

Designer John Stuart-Smith wanted to create a garden that was safe and easy to move around, ensuring it was inviting and social whilst including key quiet areas in and around the soft flowing curves within the garden design itself.

We were pleased to be part of the creation, the garden now has a sense of calm, somewhere for patients to escape. The nature surrounding the resin bound pathways and new planting areas certainly capture a special peaceful sanctuary away for the clinical environment, making patients feel more relaxed, taking their troubles away.

Spinal injuries are life changing and patients find themselves in hospital recovering for a long period of time and a tranquil environment can really help with their rehabilitation, physically and mentally. The 683m² of smooth resin bound paving material in earthy tones of Bronze and Norwegian Pearl was taken from our Natural Aggregate range. The aggregates sourced by Long Rake Spar and the colour blends designed by SureSet really accentuate the curved lines defined by a superior flexible aluminium edging supplied by Alfrepro. This garden is one of seven charity gardens in association with the NHS and their Spinal Cord Centres across the country, that are designed to be as beautiful as they are accessible – we certainly think they are all harmonious!

Key Features:

- Application: Courtyard/ pathway & internal
- Area: 683m²
- Base: Permeable Asphalt Base
- Colour: 6mm Norwegian Pearl and Bronze
- Depth: 16mm SureSet
- Edges: Aluminium

The EcoBatcher will save a project of this size 547 single-use plastic buckets!

NATURAL AGGREGATES

Natural Aggregate

Our most popular colour range providing natural aggregates that are functional and aesthetically pleasing.



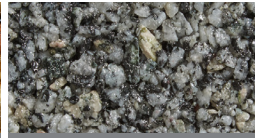
Apollo



Aztec Gold



Barley Butter



Blue Granite



Bronze



British Racing Green



Butterscotch



Chestnut



Golden Pearl



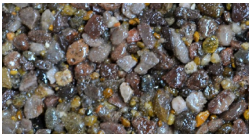
Golden Smoke



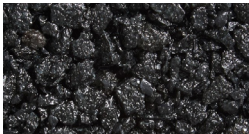
Jersey Butter



Jupiter



Mahogany



Midnight



Ocean Grey



Pearl Jam



Sterling



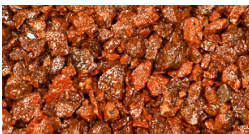
Sterling White



Sterling Midnight



Tuscan Barley Butter



Tuscan Terracotta



Winter Bronze



Winter Pearl

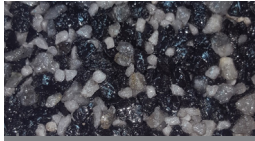
LUXURY CRUSHED MARBLE

Crushed Aggregate

These marble colours are timeless, a truly beautiful material made of traditional marble aggregate.



Alpine



Astro Dusk



Astro Peake



Astro Verde



Buttermilk



Forest Green



Popcorn



Safari



Starlight



Sterling Forest



Winter Frost

LUXURY ROUNDED MARBLE

Rounded Marble

The rounded marble exudes further elegance of the traditional crushed marbles available. Suitable for tree pit and decorative use only - do not use on driveways.



Astro Peake



Blush



Buttermilk



Diesel



Forest Green



Popcorn



Winter Frost

SPECTRUM® RECYCLED GLASS RANGE

Spectrum

A range of spectacular colours, made in-house from recycled glass and colour coated in many primary, glittery, pastel and pearlescent colours.



FlexiSet

Recycled

FlexiSet is 50% recycled rubber, 50% 6mm natural aggregate, and resin, delivering the usual environmental benefits associated with SureSet. Suitable for pedestrian use only.



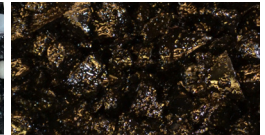
FlexiSet Bronze



FlexiSet Barley Butter



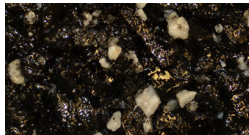
FlexiSet Canterbury



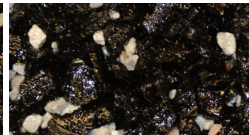
FlexiSet Midnight



FlexiSet Terracotta



FlexiSet Sterling



FlexiSet Winter

See something you like?

**Bespoke colour combinations are available upon request,
to create your own paving blend contact mail@sureset.co.uk**

RECYCLED MATERIALS

Recycled

Using either waste or by-products these recycled materials include crushed mirrors, 100% recycled glass, and crushed shells.



Bottle Glass



Mirror



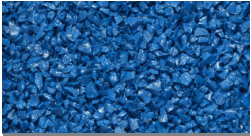
Shells

PLAYBOUND® RUBBER EPDM SYSTEM

PlayBound is our 3mm rubber system, also known as EPDM or wet pour 'rubber crumb'.



Beige



Dark Blue



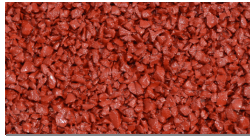
Eggshell



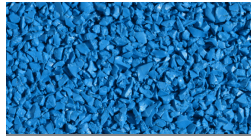
Heather Violet



Purple



Red



Sky Blue



Teal



Yellow

You can request or download our PlayBound brochure from our website.
PlayBound installations are available through selected Approved Installers only.



APPLICATION INSIGHT TREE PITS

Resin Bound Tree Pits

Tree pits are often an easy target for casually discarded litter, requiring disproportionate time and effort to keep these areas in pristine condition.

Our permeable resin bound tree pits need little maintenance, enhance the environment, eliminate the need for unsightly and costly metal grilles and are much less likely to be vandalised.

The unique resin bound structure maximises the voids between aggregate particles, allowing air flow and water penetration whilst remaining tough and durable yet with enough flexibility to allow for growth.

SuDS Compliant

SureSet is fully SuDS compliant and therefore is often the first choice for Councils as a tree pit solution. Our permeable surfacing allows water to return to the natural water table. With issues surrounding flooding and pollution, a permeable surface is becoming essential.

Non Harmful to Plants

All SureSet products cure as an inert material, meaning that they are environmentally friendly and of no danger to plants.

PH values will remain unchanged by SureSet and our tree surrounds can often act as a filter layer protecting the underlying soil from contaminants.

Heat Reflective

SureSet can be heat reflective and its voided structure allows for the absorption and evaporation of moisture combating the Heat Island effect.

The benefits of a SureSet resin bound tree pit include:

- Easy to maintain
- No loose stone
- Nowhere for rubbish to collect
- Reduces the opportunity for weeds to grow
- Covered by our 21 year guarantee when installed by SureSet, an Approved Installer or Global Partner.

Alternatively, FlexiSet can be used around trees, it is a blend of 50% recycled rubber, 50% 6mm natural aggregate and resin, delivering the usual environmental benefits associated with SureSet.



CASE STUDY

The structure of this fascinating development was endorsed by Manchester City Council and developed by them in conjunction with Renaker.

The aim was to transform the skyline of Manchester city centre with up to 25 towers – seven of which are more than 40 storeys tall.

The development will see over 6,300 residential units alongside public restaurants, cafes, and local convenience stores, as well as amenity facilities to support the primary residential use, such as gyms, health care and flexible working spaces.

The momentum was established through the successful release of Deansgate Square located on Owen Street in Manchester. Owen Street is a high-end residential development that incorporates a stunning public realm riverside plaza, a revolutionary development encompassing of four modern glassy buildings 64 storeys high directly in the city centre of Manchester!

The Deansgate Square expansion was designed with luxury in mind offering over 1,000 exquisite apartments - including some extraordinary two-storey penthouses. The facilities available had to include indoor tennis courts, a gym with yoga room as well as outdoor social areas.

Renaker Build Limited was appointed by FQ Developments Limited as the Main Contractor for the scheme at Owen Street, Manchester. The work was situated on top of Building E (Deansgate) to create a modern, social outdoor roof garden.

SureSet were invited to provide a fixed price tender to supply and install resin bound gravel works as per the design submitted to us.

The resin bound material installed on the roof top garden was 10mm Astro Peake, to a recommended level of 30mm depth onto a honeycomb grid structure known as SureCell, this type of base structure is light, easy to transport and equally as strong and sound as a more traditional base, which is why it is often chosen for projects like this.

Overall a spacious and beautifully landscaped rooftop garden was developed. The resin bound colour chosen compliments the tall monochrome building set to be the newest icon in the Manchester city centre skyline.

Key Features:

- Application: Courtyard/ roof deck
- Area: 116m²
- Base: Permeable SureCell
- Colour: Luxury marble 10mm Astro Peake
- Depth: 30mm SureSet
- Edges: Aluminium

The EcoBatcher will save a project of this size 93 single-use plastic buckets!



APPLICATION INSIGHT

FlexiSet

FlexiSet offers a rustic natural finish for any resin bound surface.

Made from 50% recycled rubber, 50% 6mm natural aggregate and our unique resin formula, FlexiSet delivers all the usual environmental benefits associated with SureSet.

The unpolished look and inherent flexibility of FlexiSet makes it ideal for:

- Woodland trails
- Jogging paths
- Pedestrian areas
- Cycle tracks
- Equestrian centres
- Drainage channels
- Golf courses
- Tree pits

Why choose FlexiSet?

- It's economical
- It's environmentally friendly
- It's lightweight
- It's flexible
- It's permeable

Suitable bases include concrete, asphalt, well-compacted stone and SureCell.

Made from shredded bus and truck tyres, the

recycled rubber itself is black, but by adding natural aggregate to the mix we can bring colour to the surface.



SureSet FlexiSet resin bound paving helps improve the issues of drainage and surface water and addresses the irregularities of trees root levels.

See our full range of colours on our website.

If you have a project you wish to self install you should consider using the following **DIY and Trade packs, DIY Kits or ProResin** please visit our Online shop to browse these products at www.suresetshop.com or contact trade@sureset.co.uk

Please note that FlexiSet is suitable for pedestrian use only.



CASE STUDY

Installing trust as well as paving

Warminster is a medium size town nestled between Bath and Salisbury, located near the popular resort of Centre Parks and the famous Safari Park, House and Gardens of Longleat.

We were invited by a local resident to survey their large sweeping L shaped driveway, which is connected to their bungalow with semi-circular steps. Their current resin bound driveway installed by the original contractor had failed, leaving loose aggregate on the surface.

We strongly urge homeowners to ensure they have an approved resin bound paving contractor before having any work carried out, we pride ourselves on workmanship and select the best contractors for the job and only use the highest quality resin available.

We worked with the homeowner to select a colour that would suit the exterior of their home and blend nicely into the cul-de-sac, the decided upon using 6mm Milk Chocolate natural aggregate as their new surface.

Luckily we were able to advise the owners of the best way to prepare for our services, cleaning and removing all the ravelled loose stones from the original failed materials and how to prepare edges that had chipped away, and areas that required sub-base work.

The installation was carried out by our Elite Approved Installer MJS Surfacing Ltd and our Inhouse Installation Team. Together the teams installed the new resin bound paving, our high

quality has proven materials, over the existing failed materials that were assessed and prior to our installation by our In-house Technical Team.

We carefully navigated around intricate areas such as drain covers and tidied up the edges that had been prepared for us which boarded the neighbour's property and the residential pavement that it's connected to. A smooth yet permeable surface was created using a hover trowel and an extended hand trowel.

The homeowners were over the moon with their new driveway and our workmanship, from the beginning they said our customer service, history of successful projects and 21-year guarantee reinstated trust in them and to show how proud and pleased they were they insisted on having a SureSet plaque installed within their stunning drive – now that is a solid seal of approval!

Key Features:

- Application: Driveway
- Area: 122m²
- Base: Tarmac/ resin-bound by a non-approved contractor
- Colour: 6mm Milk Chocolate
- Depth: 18mm SureSet
- Edges: Concrete Blocks

The EcoBatcher will save a project of this size 98 single-use plastic buckets!



APPLICATION INSIGHT

StepRise

StepRise, is the answer to installing resin bound paving vertically to deliver a complete step solution.

The StepRise is available in three formats: standard, standard cut to size and custom. They are also available as Supply Only or Supply and Installation.

Standard StepRise

Size: 1200mm x 200mm x 12.5mm
Mix type: General use
Stone size: 3mm

Standard StepRise cut to size

Details as above but cut to your required size - a maximum two straight cuts with additional cuts available on request.

Custom StepRise

Size: Customised to your requirements (up to max 1200mm x 600mm x 12.5mm)
Mix type: General use
Stone size: 3mm

Our standard and custom StepRise are available in the following colour options:

- 3mm Natural Aggregate
- 3mm Crushed Aggregate
- 3mm Marble
- 3mm Spectrum®

Additional information:

The lead time for StepRise is approximately 2 - 3 weeks (depending on colour and amount ordered).

We also supply Step Nosing (1.2m), end caps and mastic tubes. SureSet StepRise is available in Supply Only and Supply and Install options.

If you have a project you wish to self install you should consider using the following DIY and Trade packs, DIY Kits or ProResin please visit our Online shop to browse these products at www.suresetshop.com or contact trade@sureset.co.uk



CASE STUDY

The Home of Harry Potter

Leavesden Country Park is a popular public open space with walking paths, sporting courts, wildlife areas, a children's play area and an outdoor gym for adults.

The Country Park in Abbots Langley is over 27 hectares and historically known to belong to Leavesden Asylum and St. Pancras Orphanage. The Asylum held more than 2000 patients and St. Pancras over 600 orphans, both buildings were constructed in the Victorian time of 1868. The Asylum provided jobs for hundreds of locals as everything was done in-house from nursing to sewage works and tending to the 42-acre farmland and its livestock. Mental health was treated very differently back then but the park still stands and certainly still contributes to positive mental health and wellbeing which, to the Northside of the park, includes using some of the original hospital buildings for children's play areas, three football pitches, an adult outdoor gym, a BMX track and over 20 acres of a woodland area. The south side comprises 50 acres of traditional English woodland and pathways to stroll along whilst exploring a variety of fruit trees, a trellis archways and the largest Monkey Puzzle tree in Hertfordshire.

Since the 1940's part of Leavesden's land was authorised to build an aircraft factory were some of World War 2 fighter planes were built, overtime Rolls Royce used the factory to build helicopter engines and 10 years on the factory closed, and the building became an Aerodrome charting flights and teaching potential pilots to fly. In more recent times the old Aerodrome building is

most famous for being the home of Harry Potter, in fact, every single Harry Potter movie was produced at Leavesden Studios - Warner Bros! as well as Wonder Woman, Star Wars and Batman to only mention a few.

In 2019 the park received a £1.2 million National Lottery Heritage investment to improve the facilities and arts available at the Country Park, this project was also funded by Warner Bros Studios and Three Rivers Council. The plan was to incorporate Leavesden's history and heritage through its community members, ensuring they had local residents and community groups involvement.

Their ethos is about bringing communities and businesses together.

Key Features:

- Application: Pathways, Step risers
- Area: 470m²
- Base: Asphalt
- Colour: 6mm Bronze, Norwegian Pearl, Sterling and Forest Green
- Depth: 18mm SureSet
- Edges: Aluminium
- Installed by Approved Installer; The School Renovation Company

The EcoBatcher will save a project of this size 376 single-use plastic buckets!



TRADE PRODUCTS

Whether you've worked with Resin Bonded Paving and want to broaden your skill set, wish to branch into Resin Bound or simply would like to Do It Yourself, there are various resin bound self-install options.

1. ProResin, a 3-part resin only system, to use with your own aggregates to complete resin bound installations. We can suggest blends and suppliers if you are not confident in using your own. ProResin is our 3-part resin for use for use in a forced action mixer by skilled and experienced tradesmen only; this ensures a consistent and even mix of resin and aggregate required to deliver a smooth, permeable surface giving the end user a superb finish using a high-quality product designed to last longer than the majority of alternative systems available.

2. TradePack, consists of the exact resin and aggregate blend required to cover the area in m² but designed only to be used with a forced action mixer which are commonly used within the resin bound trade. We would recommend a Baron Mixer.

3. DIYPacks, is a full pack which includes everything you need to complete an installation, including resin, aggregate, mixing tools and full instructions. The DIY packs come in a convenient size to install any of the following

- **Natural Aggregates driveways & pathways**
- **Spectrum recycled glass** design & colour work.
- **FlexiSet 50% recycled rubber** pathways.
- **SureCell** recycled plastic base alternative to tarmac or concrete.

4. DIY Kit, ideal for small areas or intricate paving projects, even if incorporating into a larger design, such as a house number or company logo, into

larger pathways and driveways. No experience is required and without the need for expensive cutting or laying equipment our DIY Kits are easy to use and cover 1m² at 16mm depth in various colour ranges. They come complete with resin and aggregate and detailed instructions that guide you through preparation, mixing and laying process.

For more information on our **Training** course, **ProResin** or self-install packs, please visit our website www.suresetshop.com or **request our Trade and DIY Brochure**.



21 YEAR GUARANTEE

SureSet is dedicated to providing the highest possible service with the highest quality product.

The design technology of our resin bound paving system gives us the confidence that, when installed in accordance with our quality standards, SureSet is a hard wearing durable surface which can withstand light pedestrian to vehicular access, easily coping with the stresses of power steering and heavy axle loads.

Our permeable resin bound paving installations are fully guaranteed for 21 years from the date of application against:

- Loose stone
- Cracking
- Oil damage
- UV degradation
- Colour change
- Frost damage
- Workmanship*

* **Workmanship** is covered when supplied and installed directly by SureSet.

When installed under an Approved Installer or Global Partner the workmanship provided is covered directly by them. We provide all Approved Installers and Partners a material only guarantee.

The guarantee is conditional upon a suitable base being used, and the advice in our Aftercare and Maintenance Guide has been followed.

Materials supplied under Trade or DIY are not covered under the SureSet 21-year Guarantee.

Usage

SureSet surfaces are intended to be used by normal pedestrian or vehicular traffic for which they have been designed. Protection should be provided against abnormal usage.

Routine Maintenance

Keep the SureSet surface regularly swept clean with a stiff broom and hose with clean water.

There is a full maintenance guide available to download from our website. SureSet also offer a professional cleaning service, please contact us to arrange this service.

Washing

Washing can be carried out using a portable pressure washer to remove dirt, grime and moss.





TESTIMONIALS

The scheme is very popular with the residents and the design was awarded the Northern Design Award for best commercial landscape design. SureSet is a practical solution to roof garden requirements. The speed of installation and the excellent aesthetics and durability, makes resin bound a very valuable part of a high-quality scheme.

Nicholas Atherton - Natural Dimensions

I can highly recommend this company and their online products. I wanted something to replace my patio slabs that would look sleek and clean, I am glad I used this product. The company were professional, with good communication and answered any questions I had before buying online. The materials arrived on time, and all correspondence was professional – 5 stars from me, very happy.

Mr. Philp - DIYPack customer

SureSet were committed to ensuring that the best-finished product was achieved, on a project where precision was paramount. Professional, helpful, and polite throughout, from concept to aftercare.

Max Harriman from Tom Stuart-Smith Ltd

Thank you so much for the Kits they were brilliant to use - genuinely DIY. We had been a bit worried about how it would go but Simon positively enjoyed himself laying them and said it was quite therapeutic! They will be perfect for us at Chelsea Flower Show, the resin bound looks clean, smart, and professional and gives the space an upmarket finish which is what we really needed.

Paul Richardson from Steel Sculptures Ltd

Excellent service and application. Very pleased with completed works.

Richard Owen – Commercial project

Exceptional resin bound product. Tried many suppliers over the years but SureSet is the strongest UV resin by far. Great staff knowledge and very fast transactions and delivery of goods.

ProResin customer

SureSet UK have provided a very good service at a small development in Croxley Green in Hertfordshire. It was correcting some bad drives that had been installed by others and the way in which they carried out the work on occupied properties was also impressive.

Kebbell Homes Development Limited



CASE STUDY

Sulzano, Lake Iseo, Italy

Sulzano is a small town situated on the east shore of Lake Iseo, Italy, facing the wonderful island of Monte Isola.

During the renovation of a B&B, it was necessary to use a permeable flooring system to avoid having problems with the management of rainwater in case of precipitation. It would also enhance the outdoor spaces making them always usable by guests.

Once works on the structure were completed, the last installation involved the construction of the garden and the HiSkin/SureSet flooring system consisting of SureCell grids and a permeable resin bound paving surface in HiSkin's own blend, Arabescato. The flooring created is suitable for both pedestrian and light vehicle use, SureCell is ideal to be used in all those residential or public areas that need a stable, solid and permeable base.

SureCell is 100% environmentally friendly because it is made of recycled plastic material and filled in turn with local aggregates to create the stability.

Using SureCell therefore avoids the difficult logistics of the construction site in the case of castings with truck mixers and allows the soils permeability to be unaltered.

The buff colour of the resin bound paving blends in seamlessly with the surrounding landscape enhancing the natural hues from the plants and trees around it. A smooth pathway is easily accessible by everyone as there is no loose stone, and the low maintenance surface is perfect for this application.

Key Features:

- Application: Pathways,
- Area: 210m²
- Base: SureCell
- Colour: 3mm Arabescato
- Depth: 24mm SureSet
- Edges: Stone

The EcoBatcher will save a project of this size 376 single-use plastic buckets!

FREQUENTLY ASKED QUESTIONS

Is SureSet resin bound paving BBA approved?

We are a British Board of Agrément certified business 20/5719.

Do you have an accredited CPD presentation?

SureSet offers an approved CPD Certification Service. Providing professionals with the ability to develop and enhance their knowledge of permeable resin bound paving systems.

How do I specify SureSet?

We are partners of NBS Source and have further information on our website.

How much does a SureSet surface cost?

Each project is priced individually depending on the location, size of area, application type and aggregate choice. Contact us at sales@sureset.co.uk with this information and we can provide a quotation.

Can heavy vehicles drive over SureSet?

SureSet is suitable for use in car parks and access roads and can be driven on by lorries and maintenance vehicles.

Is the resin toxic?

No. Once installed SureSet is an inert material.

How is it permeable?

SureSet is carefully mixed to ensure each particle is well bound to its neighbour whilst allowing the maximum void space between them for drainage.

What depth is it normally laid at?

The depth of SureSet will vary for each project, this depends on the type of application and the size of the aggregate used. Typically the depth of SureSet is approximately 18mm.

Can I lay it myself?

Trade and DIY Packs including ProResin are available for self-install projects. DIY kits are perfect for smaller areas. We recommend using a SureSet Installation Team for larger projects.

How long does it take to cure?

SureSet resin bound paving is suitable for use after six to eight hours for pedestrians and 12-16 hours for vehicles. For heavy vehicular use, we recommend 24 hours to ensure the surface is fully cured.

Is it easy to clean?

Yes, SureSet is low maintenance. Regular sweeping and the occasional power washing is recommended to keep it looking fresh.

How long will it last?

SureSet comes with a 21 Year Guarantee, however the resin technology suggests it will last in excess of 25 years.

Can I use the resin with aggregate I already have?

In principle yes, although any aggregate would need to satisfy our minimum quality standard. If you would like to discuss this further, please contact us.



SureSet, specialise exclusively in Resin Systems for Permeable Resin Bound Paving, manufacturing, supplying, and installing high quality resin systems since 1997.

With the support of our network of Global Partners resin bound projects are being professionally installed anywhere in the world.

By combining our superior clear resin and premium quality natural aggregate, marble, and recycled materials we offer you the highest quality resin bound paving system that is permeable, durable, UV stable, accessible, easy to maintain, and SuDS compliant.

Keep up to date with the latest news from SureSet via our social media and by visiting our website.



SureSet UK Ltd

32 Deverill Road Trading Estate
Sutton Veny
Warminster
Wiltshire
BA12 7BZ
United Kingdom

T: +44 (0)1985 841180
E: mail@sureset.co.uk
www.sureset.co.uk